

FUTURE FOUND INSULATED FOUNDATION SYSTEM

TYPICAL INSTALLATION GUIDE

FOR STANDARD C-SHAPE EDGE PROFILE

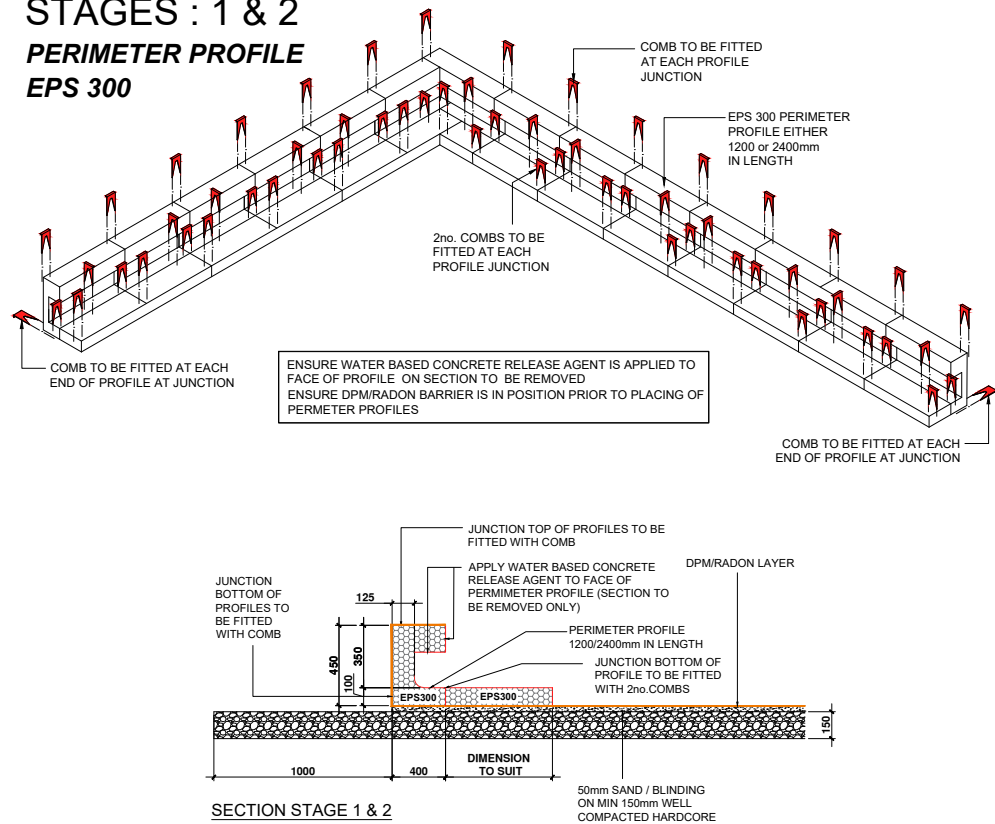


IMPORTANT: PRIOR TO PERIMETER EPS300 PROFILE BEING POSITIONED THE CONTRACTOR NEEDS TO ENSURE THAT THE REQUIRED SERVICES , DRAINAGE OR DUCTWORK ARE ALREADY IN POSITION . THE ENTIRE AREA UNDER THE FOUNDATION NEEDS TO BE LEVEL AND ALSO HAVE A MINIMUM OF 150mm WELL COMPACTED HARDCORE WITH SAND BLINDING IN PLACE. THE DPM SHOULD BE PLACED UNDER THE EPS FOUNDATION THEREFORE PLEASE CHECK WITH THE PROJECT DRAWINGS & SECTIONS FOR CORRECT PLACEMENT, OR CONTACT BUILD-LITE FOR ADVICE.

STAGES : 1 & 2

PERIMETER PROFILE

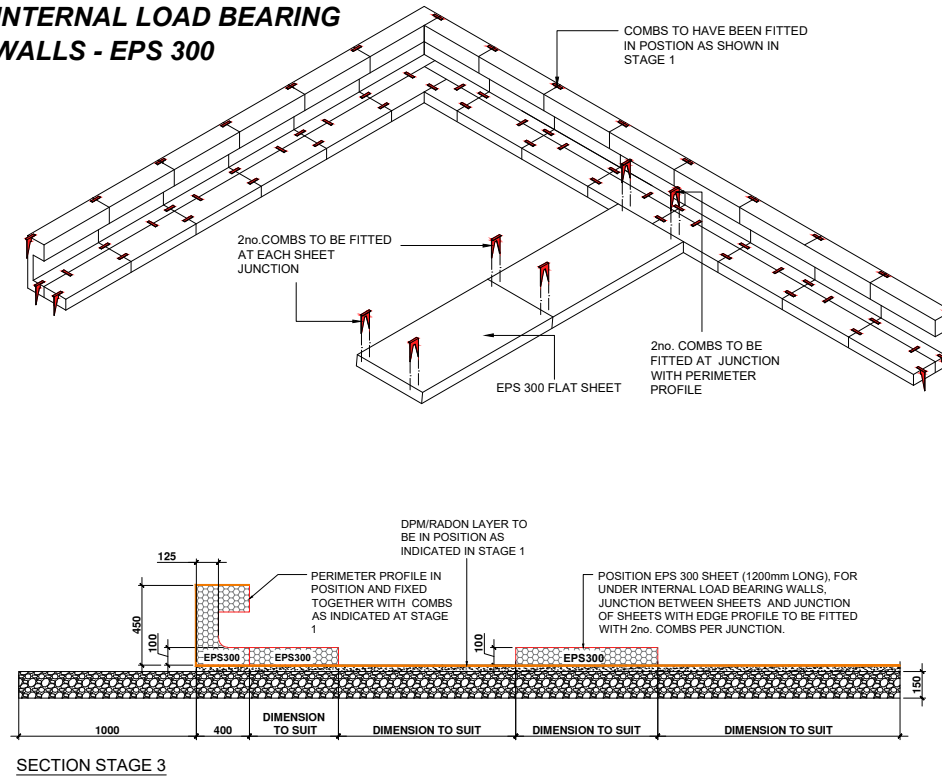
EPS 300



STAGE : 3

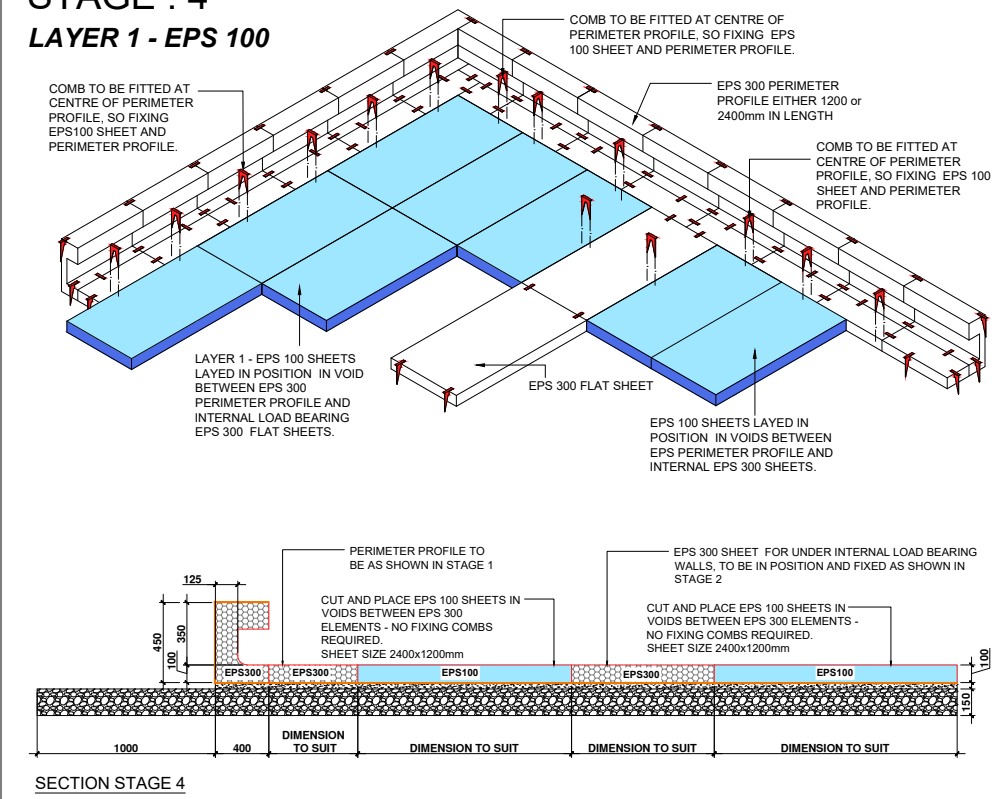
INTERNAL LOAD BEARING

WALLS - EPS 300



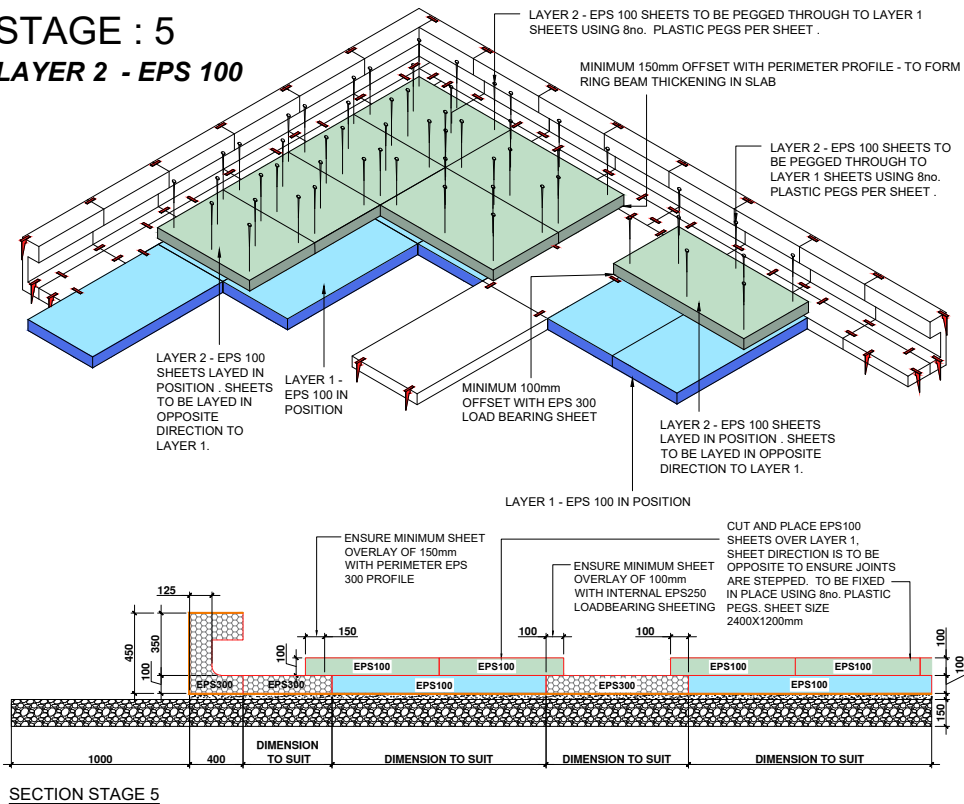
STAGE : 4

LAYER 1 - EPS 100



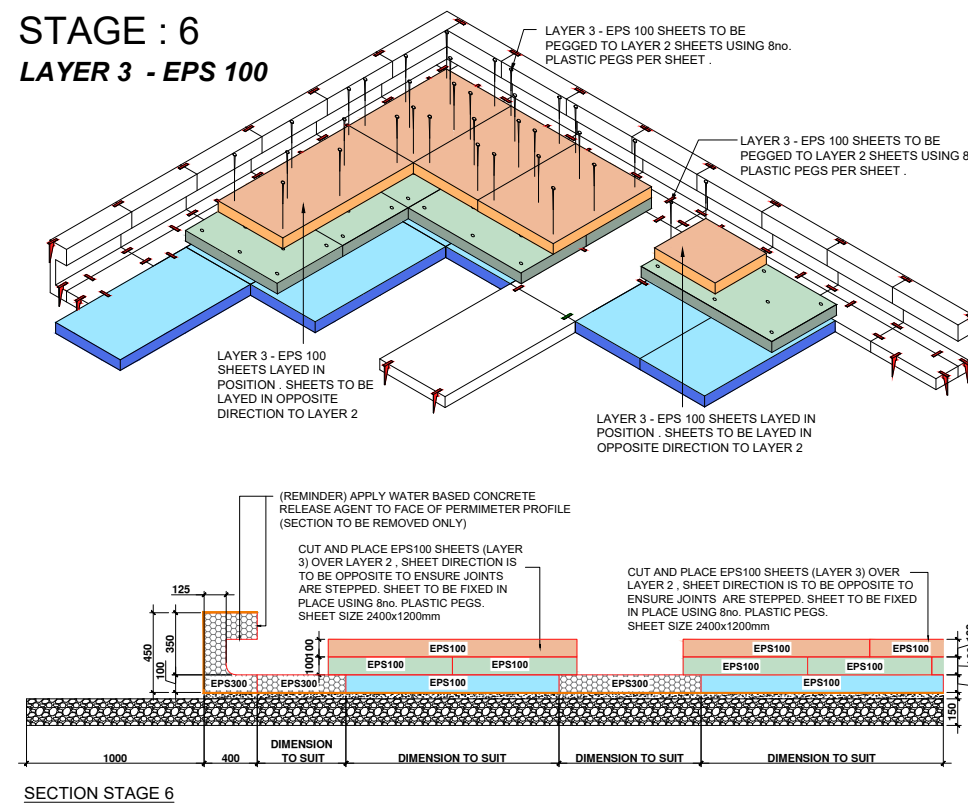
STAGE : 5

LAYER 2 - EPS 100



STAGE : 6

LAYER 3 - EPS 100



STAGE : 7

EPS FORMWORK COMPLETE

