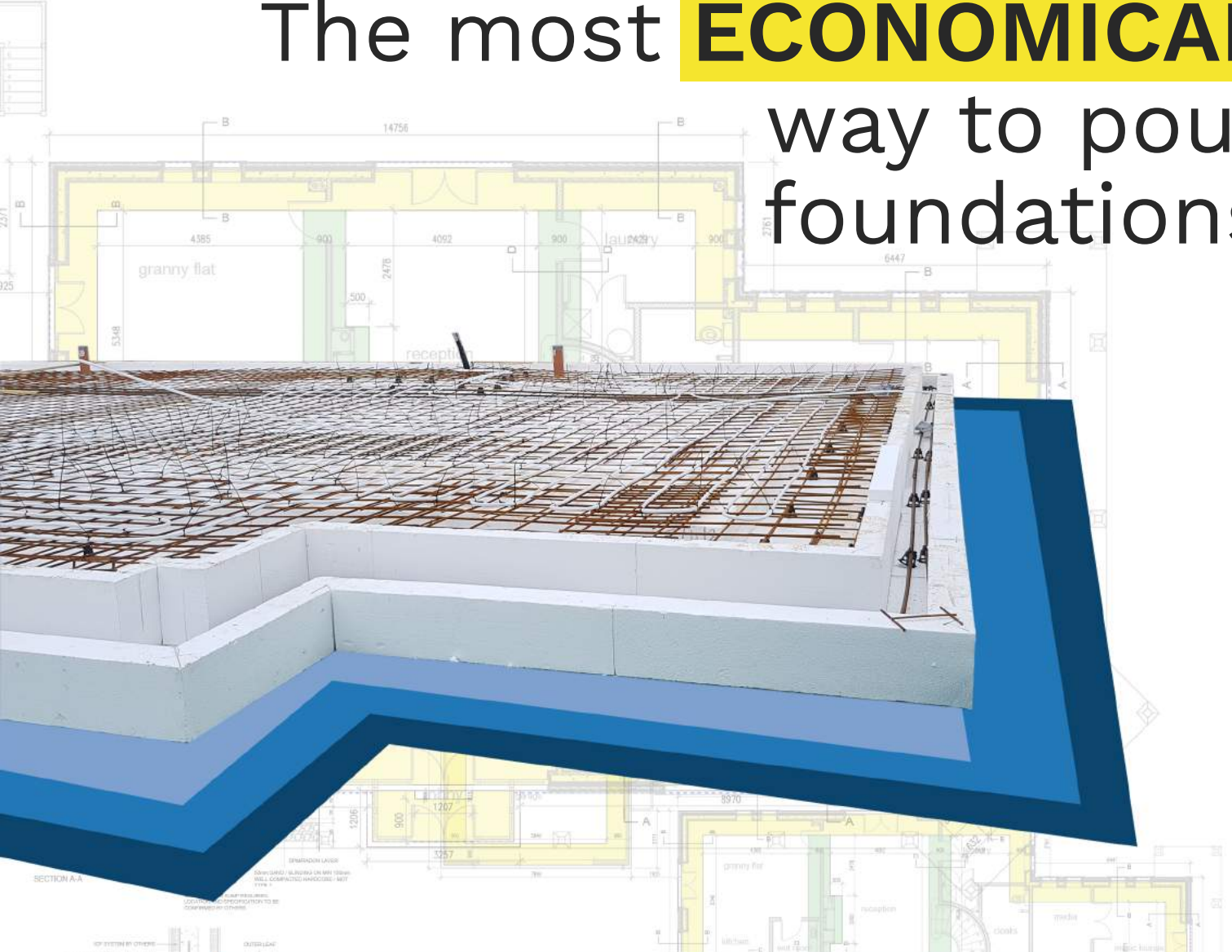


The most **ECONOMICAL** way to pour foundations

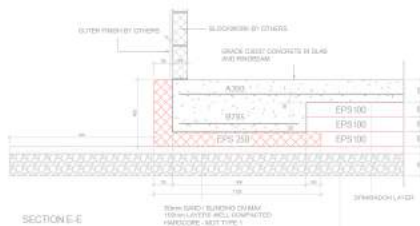


**POURING FOUNDATIONS
MADE EASY**

**FINISHED FLOOR LEVEL
ACHIEVED IN ONE CONCRETE POUR**



**BUILD
LITE**



What is



Future Found is a trenchless system, manufactured in the UK, that uses High Density Expanded Polystyrene formwork (EPS), designed & cut to suit the individual project design.

The product arrives on site as a fully engineered ready-made formwork that fits together to create a fully insulated concrete structural foundation.

This outline then remains in the ground and concrete poured **in one operation** to create an eco-efficient slab foundation.

Future Found is suitable for most ground conditions with loads being distributed more evenly - saving money on machine time and spoil removal.

It is also individually designed by a qualified structural engineer, taking into consideration ground conditions and both line and point loadings.

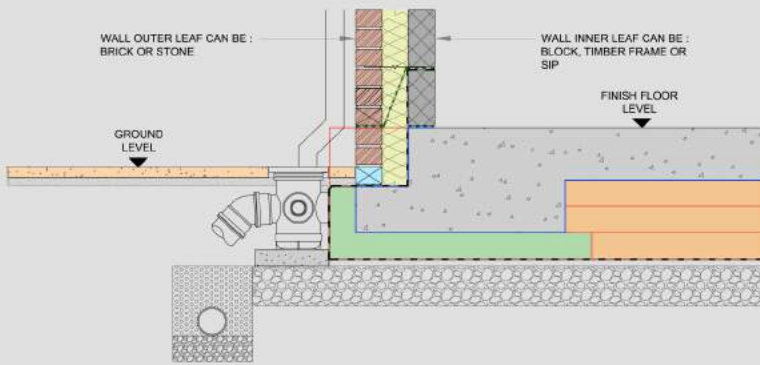


Future Found is a **HIGHLY COST EFFECTIVE** alternative to traditional methods

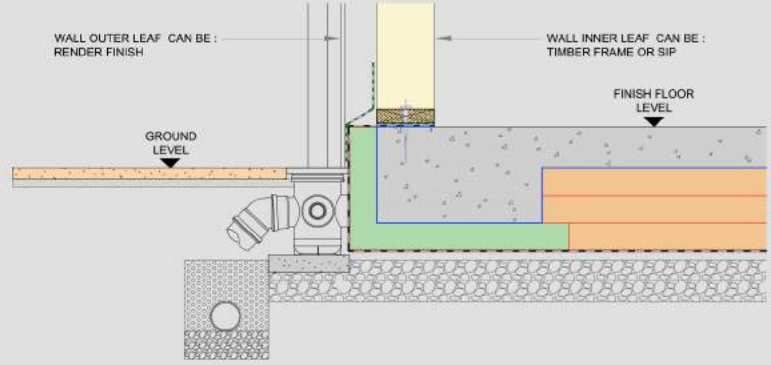
Future Found offers **cost savings of around 30%** on materials and up to **50% savings on labour**. This is thanks to the fact the foundations and ground floors are manufactured site specific and installed in days rather than weeks when using traditional methods.

Suitable for all building types

CAVITY WALL CONSTRUCTION



TIMBER FRAME CONSTRUCTION

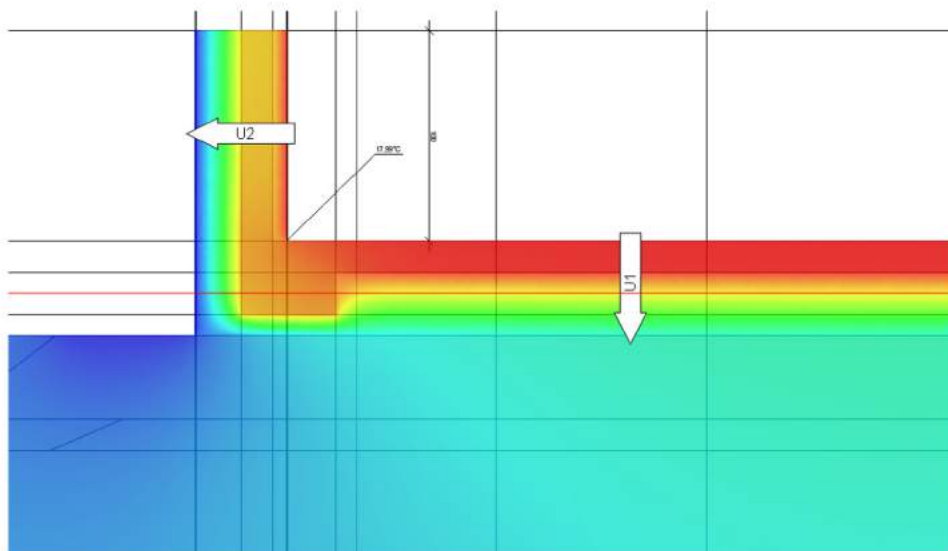


Key BENEFITS

- ✓ MANUFACTURED OFF SITE DELIVERED JUST IN TIME
- ✓ FULLY ENGINEERED STRUCTURAL DESIGN
- ✓ OFFERS LOW U-VALUES
- ✓ ELIMINATES WALL TO FLOOR COLD BRIDGES
- ✓ UNDERFLOOR HEATING CAPABILITY
- ✓ LESS CONCRETE SAVING TIME & MONEY
- ✓ CREATES A THERMALLY INSULATED ENVELOPE
- ✓ SUITABLE FOR MOST GROUND CONDITIONS

THE FOUNDATION OF AN ENERGY EFFICIENT BUILDING.

Future Found is precision engineered to provide an ultra-low U-Value and high thermal efficiency.



Thermal bridge – generic wall

ECO FRIENDLY

Future Found is environmentally friendly and chemically non-aggressive. It is also easily recycled as raw material.



We have also been awarded the British Board of Agrément (BBA) certificate.

Scan QR code to take you directly to our BBA certificate



HERE IS A STEP BY STEP GUIDE SHOWING HOW FUTURE FOUND CAN DRASTICALLY REDUCE YOUR FOUNDATION COSTS:



STEP 1 PREPARATION

Clear the top soil to the required level & lay compacted hardcore to the engineers design. Radon sumps & pipe work are laid at this stage. String line the perimeter for ease of alignment.



STEP 2 INSTALLATION

At delivery, place all the pieces individually, starting with the prefoamed corners layout the exterior, check measurements & squareness against the drawings. Use a laser level to check foundation levels are correct.



STEP 3

Continue placement of ring beam profiles and trim to ensure a tight fit. Use the spikes provided.



STEP 4

Place Future Found sheets over the remaining foundation and overlap to achieve insulation continuity. Secure with the supplied pins.



STEP 5

Install steel reinforcement according to the engineers specification and drawings. Full fixing and instructions are available on request.

It's that easy to produce a trench-less and highly insulated foundation base.



For a detailed quote, send us your architectural plans and let us demonstrate how you can save time, materials and costs on your next building project.



Build-Lite (UK) Ltd, Kingsforth Road,
Thurcroft, Rotherham, S66 9HU
Phone: **0844 870 6735** | Fax: **0844 870 6745** |
Email: **sales@build-liteuk.co.uk**

