

INSULATED FOUNDATION SYSTEM

SAVE UP TO 50%
ON MATERIALS, LABOUR AND TIME!



 **FUTURE
FOUND**

THE MOST ECONOMICAL AND EFFICIENT WAY TO POUR FOUNDATIONS AND FLOORS!



STEP 1: Clear the topsoil, take levels and lay compacted hardcore 150mm deep. Radon sump and pipework are laid at this stage.



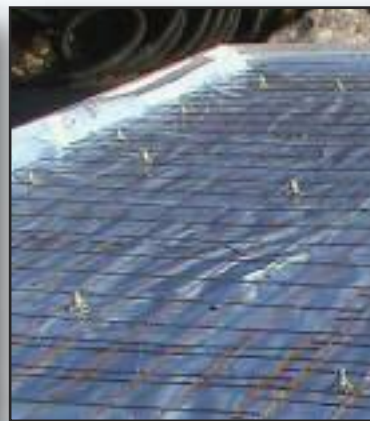
STEP 2: Place corners in position and set level.



STEP 3: Continue placement of ring beam profiles. Trim profiles as necessary to achieve a tight fit.



STEP 4: Place three layers of floor insulation sheets over the remaining foundation. Overlap sheets to achieve continuity of insulation. Secure with pins provided.



STEP 5: Install steel through the ring beam profiles and place steel mesh reinforcement according to our structural engineer's design. (Supplied).



STEP 6: Insulated foundation system is now complete and ready to take 100mm concrete.

- Suitable for all ground conditions.
- Suitable for all building types (ie brick /block, timber-frame etc)
- Lowest U-values.
- Eliminates wall floor cold bridge.
- System will not diminish over time and is unaffected by water.
- Passive slab approved.

Send us your architectural plans and we will give you a detailed quotation, outlining how our system will save you money, by using less materials, labour and time!



39 Blyth Road, Maltby, Rotherham, S66 8HX, UK

t: 0844 870 6735 f: 0844 870 6745 e: info@futurefound.co.uk w: www.futurefound.co.uk

COST COMPARISON:

Traditional Foundation:
200m² house, concrete used = 65m³
Future Found System:
200m² house, concrete used = 20m³